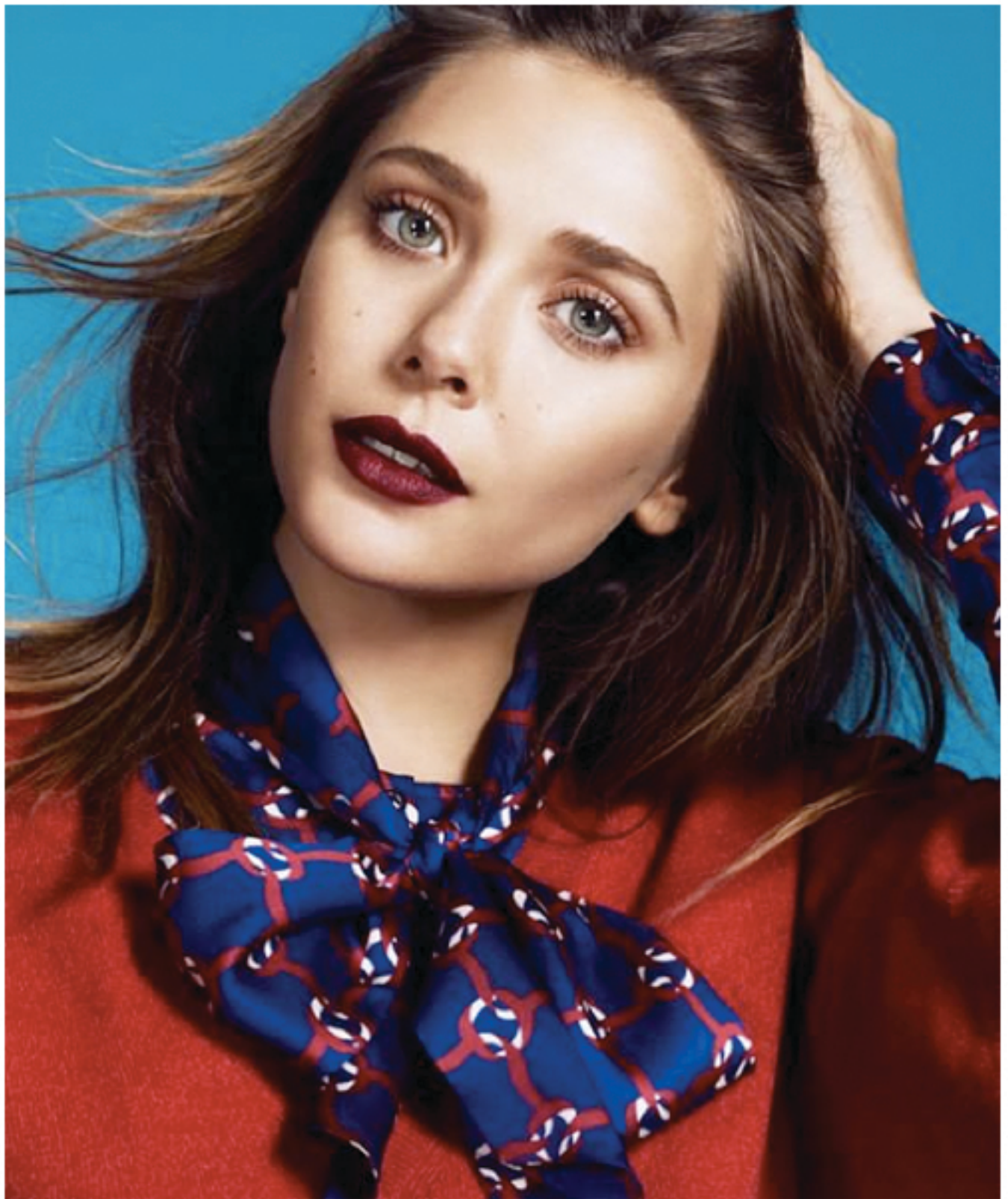


Get The Look: Eco-Friendly Fall Makeup

On September 19, 2012 by Bellina



With the blink of an eye, fall has descended upon us. Gone are the neons and pastels; replacements come in the form of jewel tones and layers.

Elizabeth Olsen sports one of the many **Fall trends**, plum ruby lips, in *The Guardian UK*. With such a strong lip color, it's best to keep the rest of the face bare. Make sure all imperfections are covered up; the dark color will pick up any redness or imperfections in the face. Even, clear skin is the canvas we're looking for. All that's left is to define our eyebrows, swipe a coat of mascara on, and a careful application of your selected lip color (with a lip brush if you're up to it), and you're ready to go.

Try the products below to achieve Olsen's look:

1. Even skin with **Kora Tinted Day Cream**.
2. Defined brows with **Shobha Eye Brow Pencil**.
3. A swipe of San Soucis Thermal **Mascara Volume**.
4. Plum lips with NVEY ECO's **Advanced Care Lip Color** in 355 or 372.